

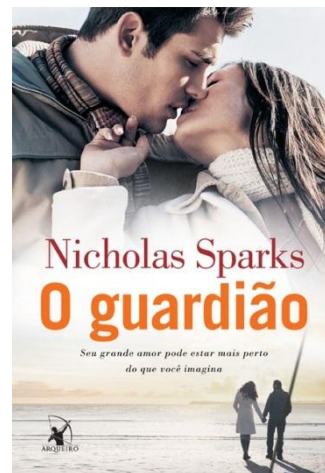
Novas aquisições CI – Jan./Fev. 2014



DVD 778.534.6 H832



DVD 791.43-22 S693



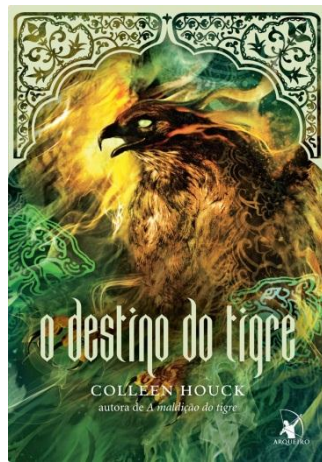
820(73)-31 S736g



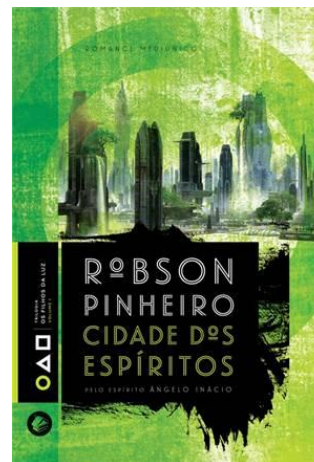
820(73)-93 H835r



820(73)-93 H835v



820(73)-93 H835d

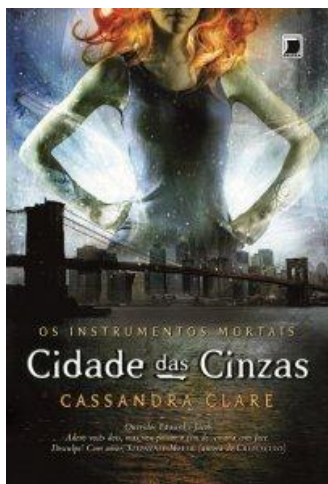


133.9 I35c

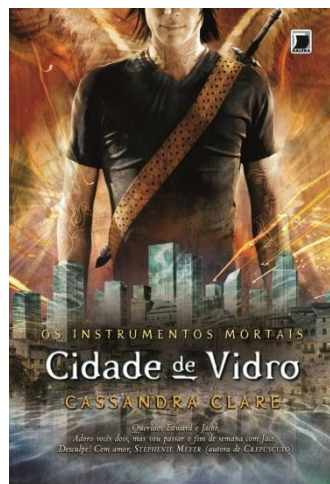


820(73)-93 C591c 12.ed.

Novas aquisições CI – Jan./Fev. 2014



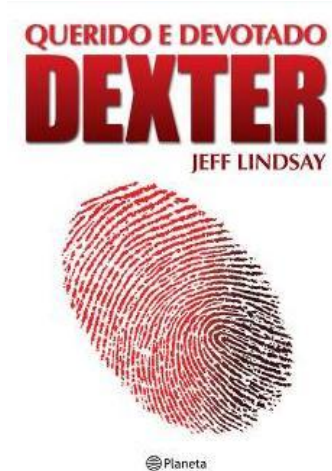
820(73)-93 C591c 12.ed.



820(73)-93 C591c 10.ed.



7.037(81) S244a



820(73)-312.4 L748q



7.072/.073(81) A599m 2.ed.



820(73)-93 G796t



869.0(81)-93 M675t



869.0(816.5)-34 V517u

Novas aquisições CI – Jan./Fev. 2014



820(73)-31 S736c



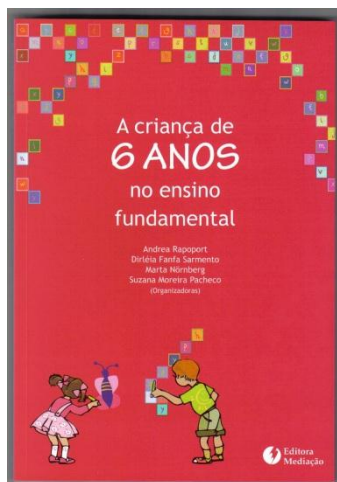
7:004.4'27 I61



376.33 S586o 3.ed.



820(73)-31 R846n



372.4 C928 2.ed.



373.2 P712 2.ed.

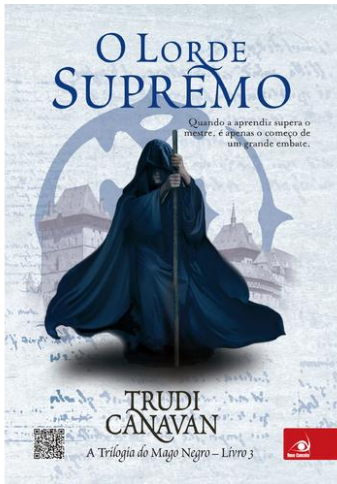


DVD 778.534.6 R373



DVD 791.43-93 H323

Novas aquisições CI – Jan./Fev. 2014



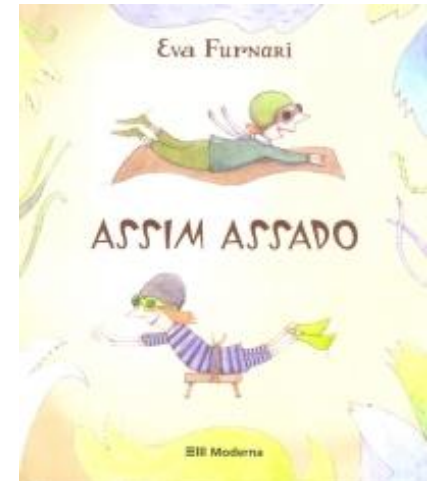
820(94)-93 C213l



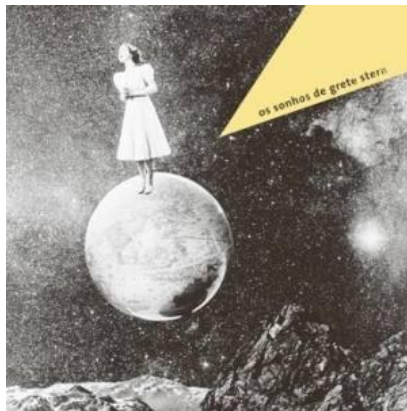
820(73)-93 C591c 7.ed.



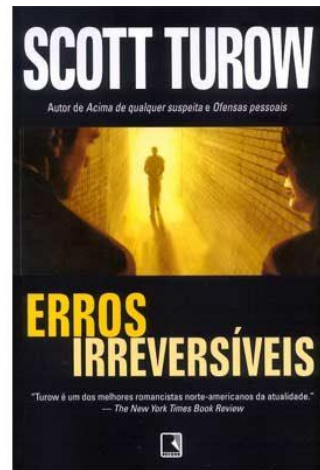
820(73)-93 C591c



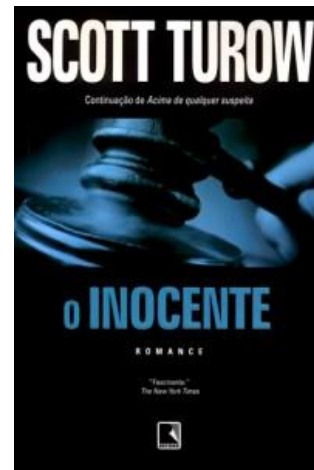
BI 087.5 F987a 3.ed.



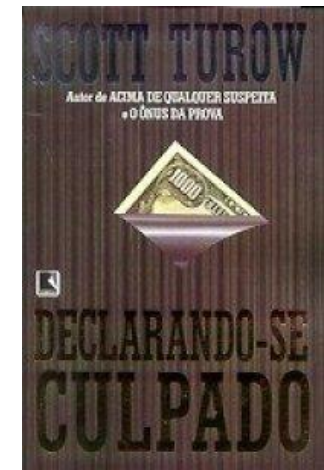
77.024.48 S839s



820(73)-312.4 T956e 9.ed.

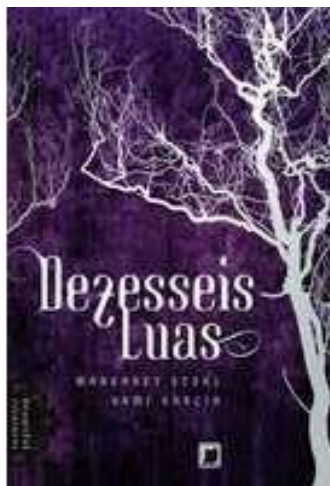


820(73)-312.4 T956i

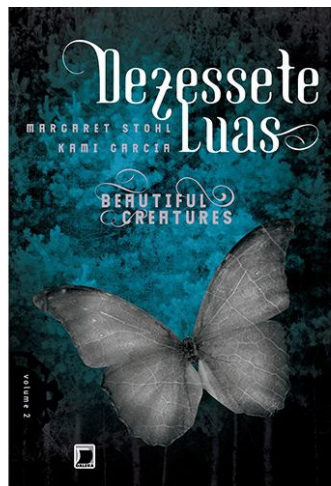


820(73)-312.4 T956d 7.ed.

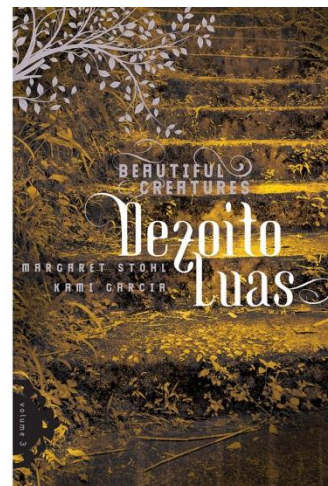
Novas aquisições CI – Jan./Fev. 2014



820(73)-31 S873d 4.ed.



820(73)-31 S873d 5.ed.



820(73)-31 S873d 3.ed.



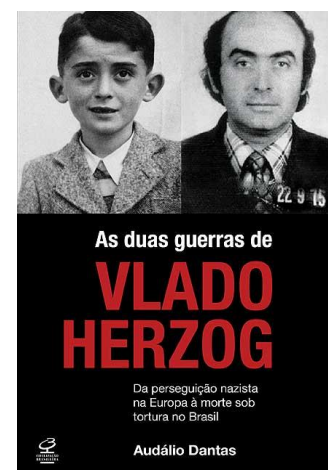
796.851 V816j 3.ed.



869.0(81)-31 T711c



796.012.6 W358a



070-051(81) H582D



DVD 778.534.6 U58

Novas aquisições CI – Jan./Fev. 2014



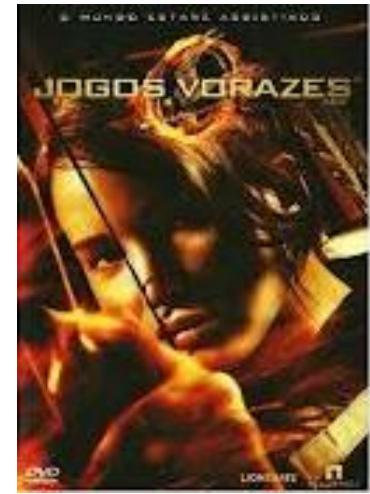
DVD 791.43-252 R433



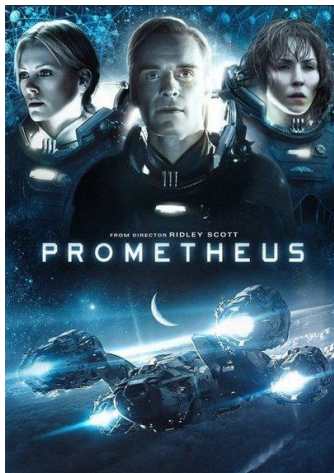
BIJ 087.5 A994c



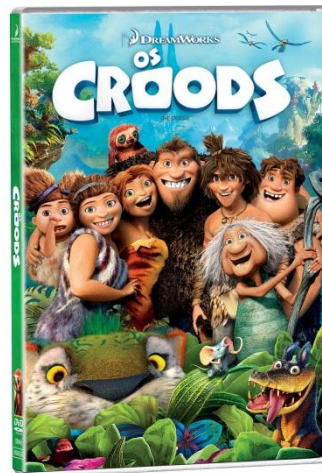
796:37.013 P371



DVD 791.43-311.3 J64



DVD 791.43-252 P965



DVD 778.534.6 C948



DVD 791.43-311.3 H765



DVD 778.534.6 M597

Novas aquisições CI – Jan./Fev. 2014



820(73)-31 S873d 4.ed.



37.013.82 A544a 2.ed.



78.071.5-053.2 M987



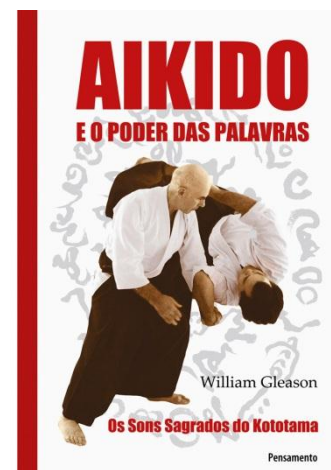
159.922.7/.8 T266m 4.ed.



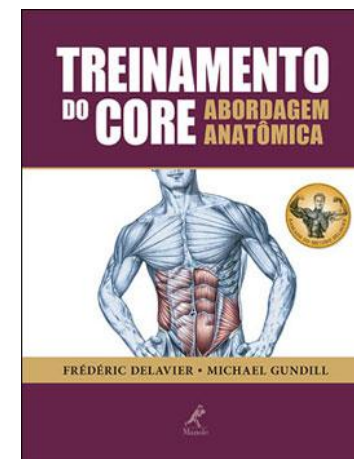
37:62 K36t



37.018.43 C737

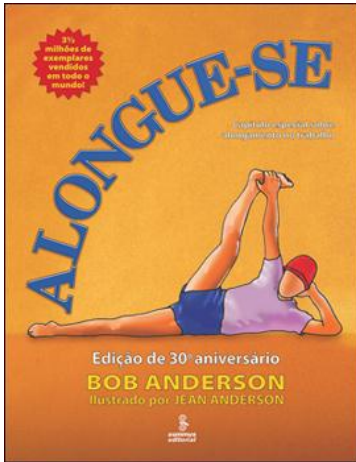


796.85 G554a

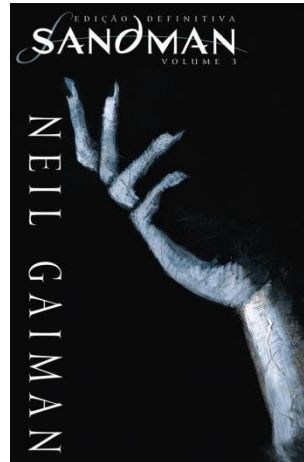


796.015.52 D343t

Novas aquisições CI – Jan./Fev. 2014



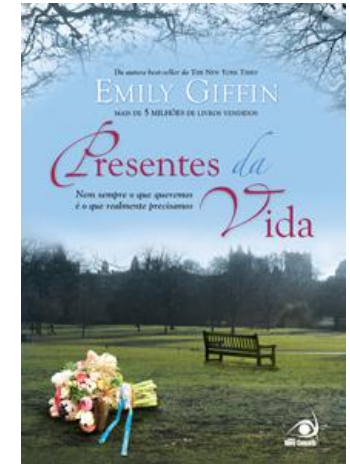
796.012.6 A545a



741.5 G141s v.3



77 039



820(73)-31 G456p



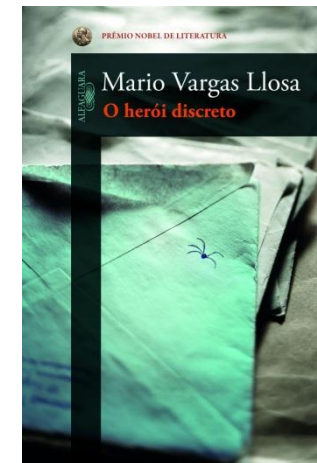
658.512.2 M963d 2.ed.



792:37 T274p 2.ed.

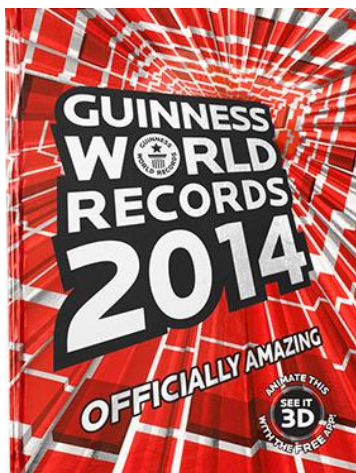


820(73)-93 N765t

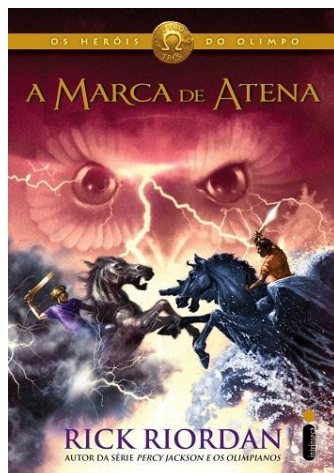


860(85)-31 V297h

Novas aquisições CI – Jan./Fev. 2014



R 030(089.3) G964 2014



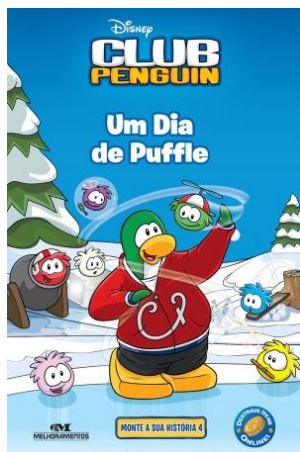
820(73)-93 R585m



BI 087.5 W177e



BI 087.5 G326q



BIJ 087.5 W521d



BI 087.5 F874d



BI 087.5 M434e



DVD 778.534.6 L865

Novas aquisições CI – Jan./Fev. 2014



DVD 778.534.6 S666



DVD 778.534.6 M756



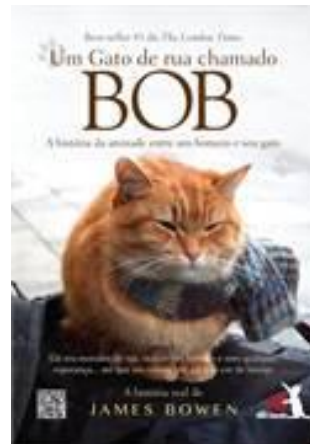
DVD 791.43-23 S623



DVD 791.43-23 N384



7.036 N323v



820-312.6 B786g



77.04 D612

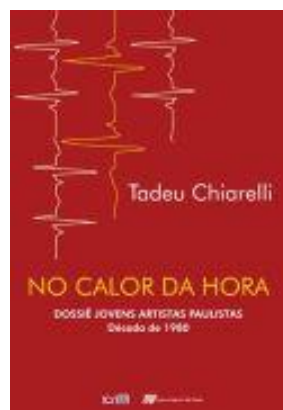


7.01 P379p

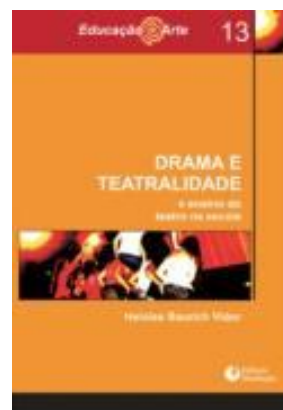
Novas aquisições CI – Jan./Fev. 2014



7:004 A786



73-051(81) C532n



792:37 V654d



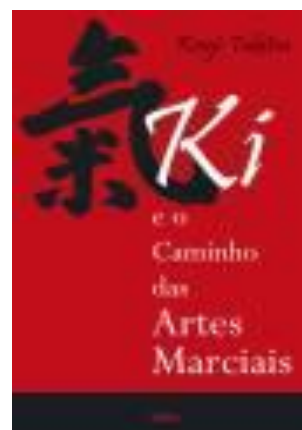
7.071.5 A663e



741:004 M541d



7.036 A772



796.85 T646k



658.336 T253

Novas aquisições CI – Jan./Fev. 2014



796-053.2 S685e



79-053.2 F911b



379.85 B924t



78 C386m



004 P923d 3. ed.



73-051(81) M319



159.922.8 V268a



796.09 M415e

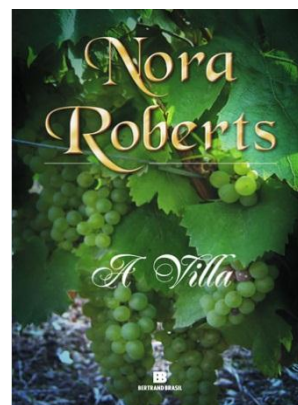
Novas aquisições CI – Jan./Fev. 2014



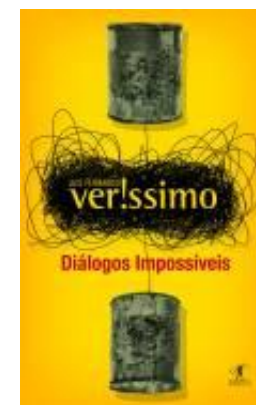
797.2 I62



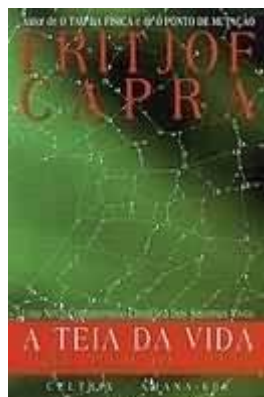
820(73)-31 A465m



820(73)-31 R646v 3. ed.



869.0(816.5)-94 V517d



50:1 C251t 13. ed.



373.3(81) I43

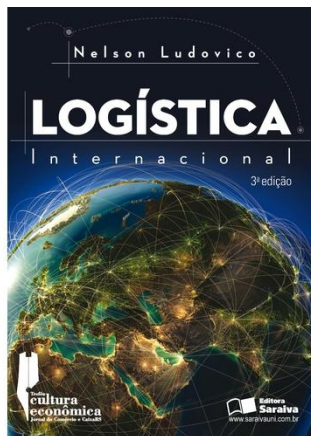


7.071.5 M386t



658.8 G393 2.ed.

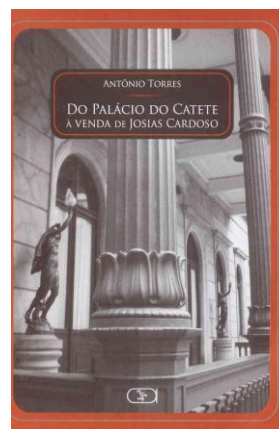
Novas aquisições CI – Jan./Fev. 2014



658.7:339.5 L946l 3. ed



869.0(81)-1 M838p



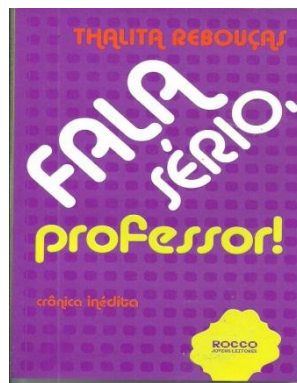
869.0(81)-943 T693d



869.0(81)-93 P644l 11. ed.



869.0(81)-93 P644r 7. ed.



869.0(81)-93 R292f 2. ed.



869.0(81)-93 R292f 2. ed



869.0(81)-93 R292f 2. ed

Novas aquisições CI – Jan./Fev. 2014



869.0(81)-93R292f 2. ed



869.0(81)-93 R379c



820(73)-31 C455f



820(73)-31 C455a



820(73)-31 C455d



820(73)-31 C455r

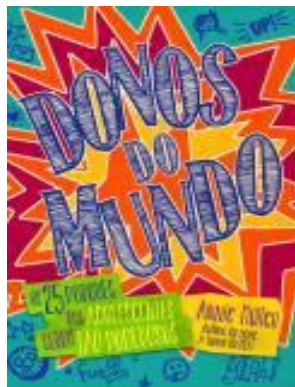


820(73)-31 C455e



869.0(81)-93 V658d 5. ed

Novas aquisições CI – Jan./Fev. 2014



869.0(81)-93 M958d



860-93 K58d



860-93 L473d



820(73)-31 O48p



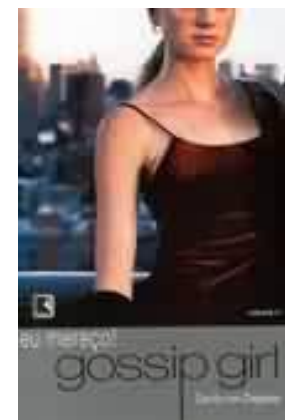
869.0(81)-93 F178p



820(73)-93 Z66g 14 ed.



820(73)-93 Z66g 8. ed.



820(73)-93 Z66g 5. ed

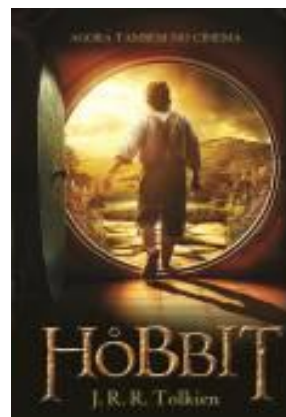
Novas aquisições CI – Jan./Fev. 2014



869.0(81) L796p 2. ed.



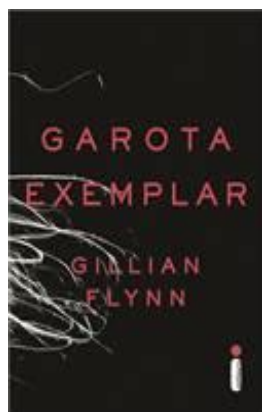
BIJ 087.5 A698b



820-31 T649h 5.ed.



820(73)-31 R846t



820(73)-31 F648g



820(73)-31 M381f



321 C758 2. ed.



820(73)-93 Z66g 5. ed

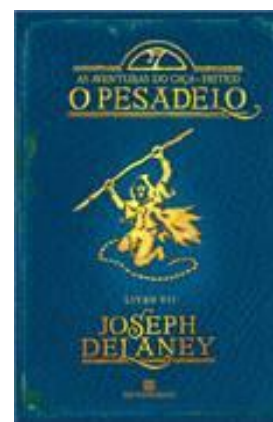
Novas aquisições CI – Jan./Fev. 2014



133.9 L939s



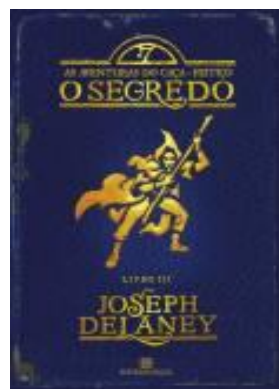
820(73)-31 S736m



820-93 D337p



820-93 D337m 7.ed.



820-93 D337s 6.ed.



820(73)-93 G796q



364.4:616-053.9 D722i

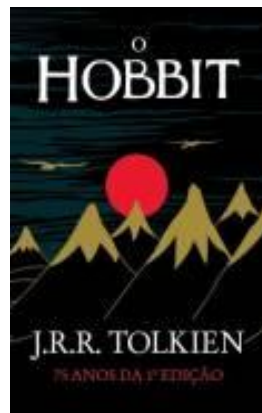


159.942 G462m

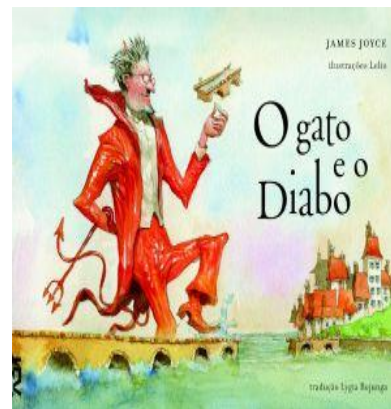
Novas aquisições CI – Jan./Fev. 2014



820-93 C874c



820-31 T649h



BI 087.5 J89g



869.0(81)-31 G557h



820(73)-312.4 P317e



820(73)-312.4 P317d



820(73)-93 B823m



869.0(81)-93 R379c

Novas aquisições CI – Jan./Fev. 2014



BIJ 087.5 A698b



869.0(81)-93 R175t



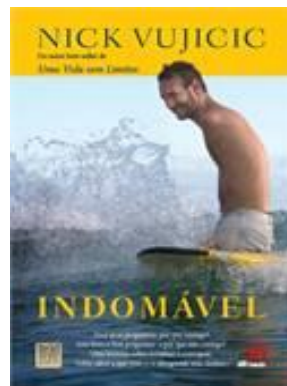
BI 087.5 K82v



869.0(81)-31 G557h



BI 087.5 M724d



159.947 V989i