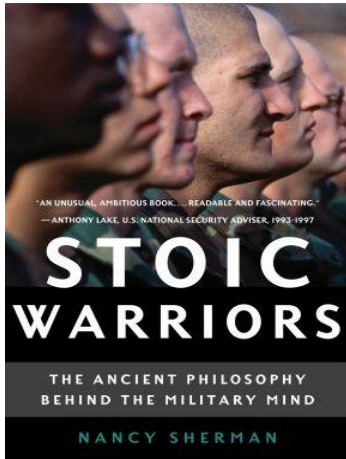
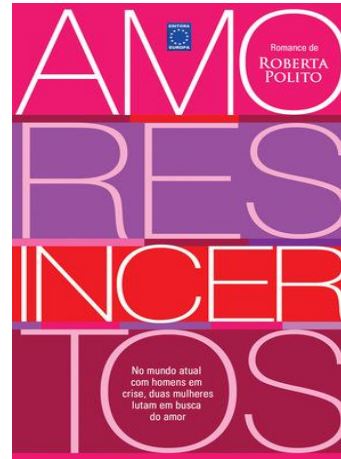


Novas Aquisições CII – Agosto 2013



355/359 S553s



869.0(81)-3 P769a



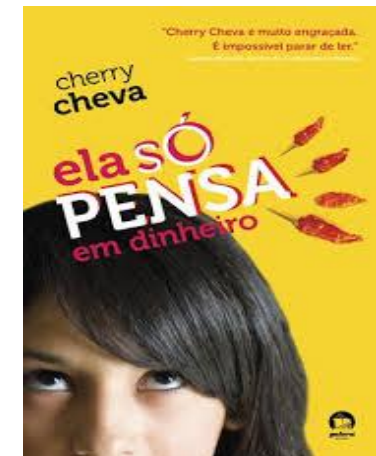
391:741.02 L215d 2.ed.



806.90-54 E19e

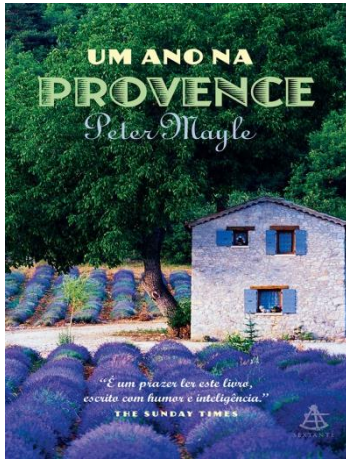


658.89 B749q

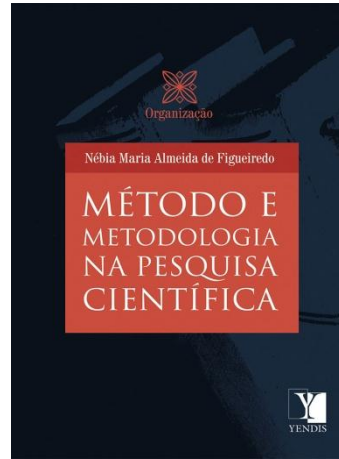


820(73)-31 C527e

Novas Aquisições CII – Agosto 2013



913 M469a



001.8 M593 3.ed.



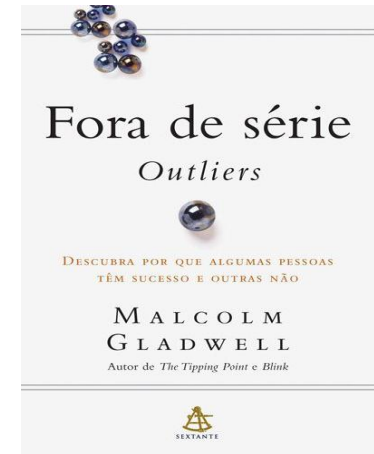
087.5 C298m



615.82 K26b

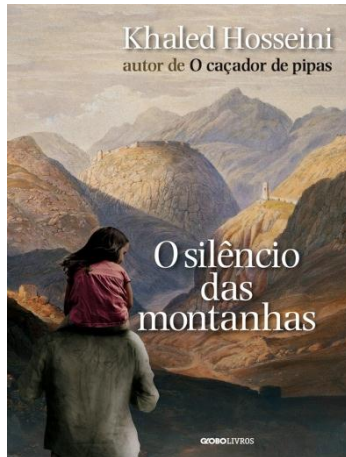


820(73)-93 P211e



658.3 G543f

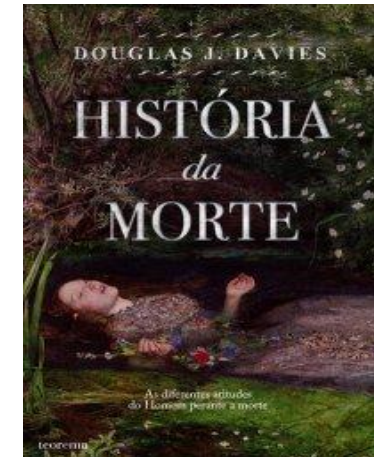
Novas Aquisições CII – Agosto 2013



891.58-31 H829s



820(73)-3 S736m



128:159.9 D255h



347.13/.14 M527t 15.ed.



339.5(81) A162c

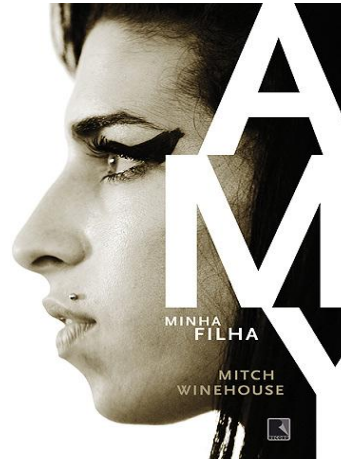


316.46 G266s 2.ed.

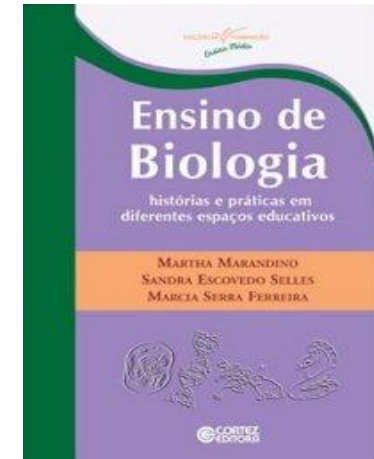
Novas Aquisições CII – Agosto 2013



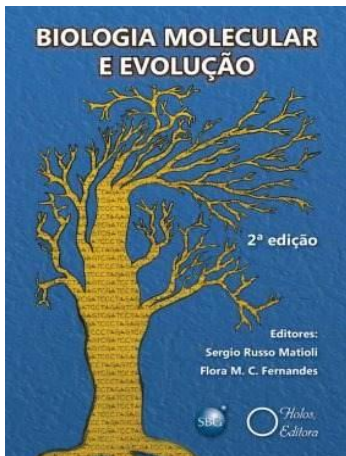
82-3 Z23b



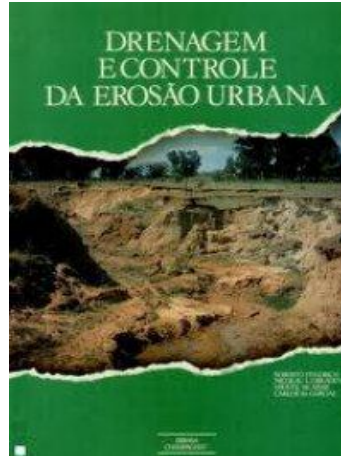
78-051 W767a 2.ed.



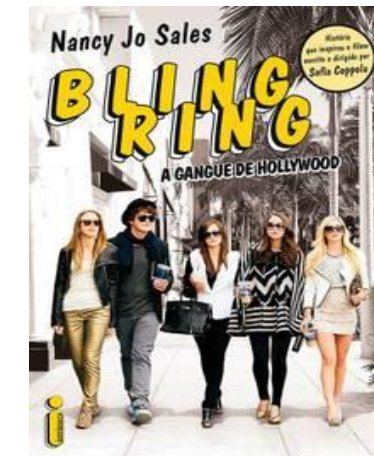
573 M311e



576.32/.36 B615 2.ed.

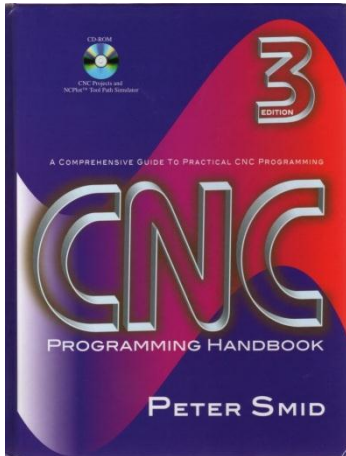


631.459 D771 4.ed.



159.922.8 S163b

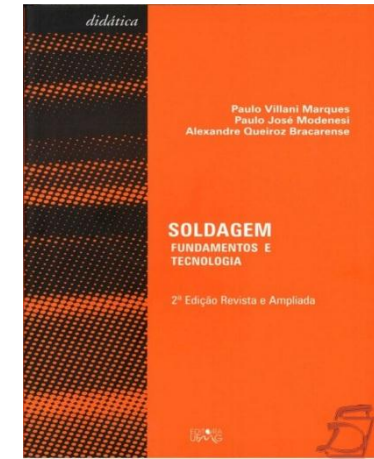
Novas Aquisições CII – Agosto 2013



658.5:004 S639c 3.ed.



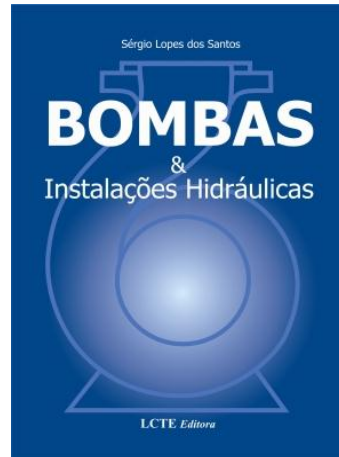
82-3 K11m



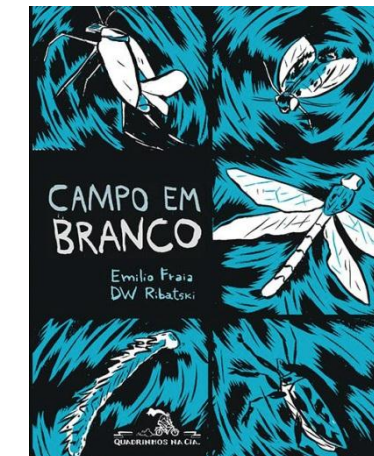
621.791 M357s 3.ed.



621.9:669-1 T314 2.ed.

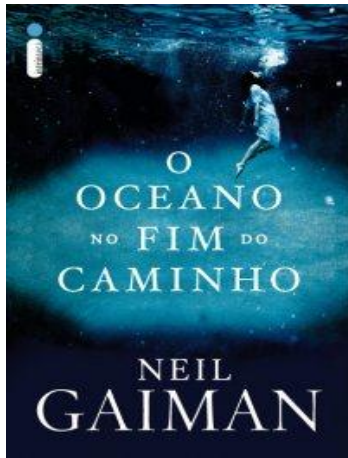


621.65 S237b



741.5 F812c

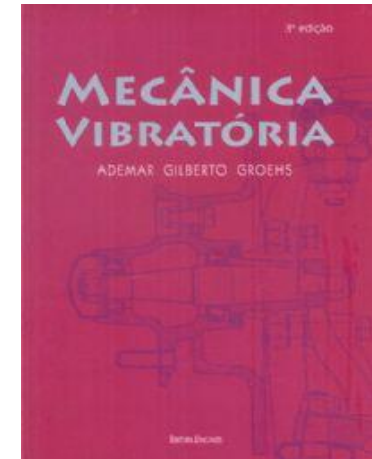
Novas Aquisições CII – Agosto 2013



820-3 G141o



830-31 H587I 38.ed.



534 G874m 3.ed.



77 S571c

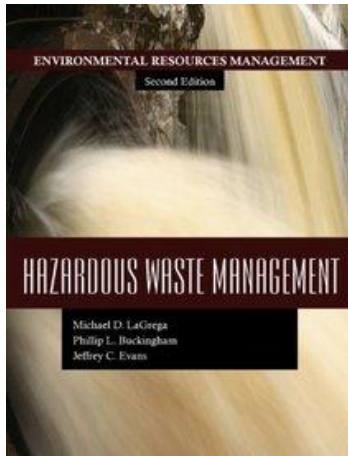


159.961 R774h

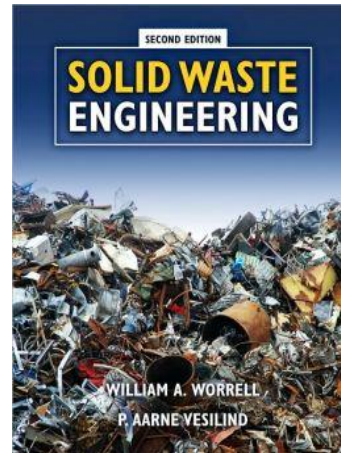


663.2 K63c

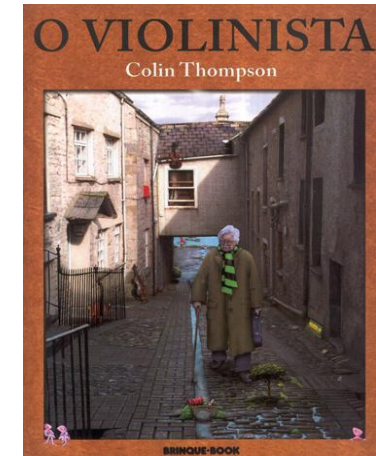
Novas Aquisições CII – Agosto 2013



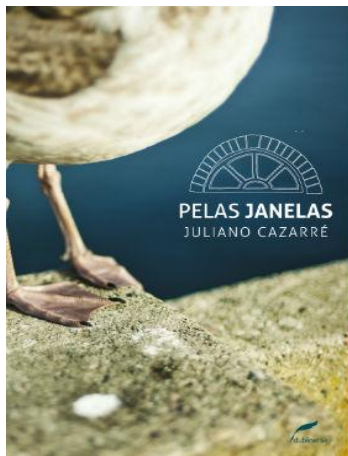
628.4(469) L179h 2.ed.



628.544 W929s 2.ed.



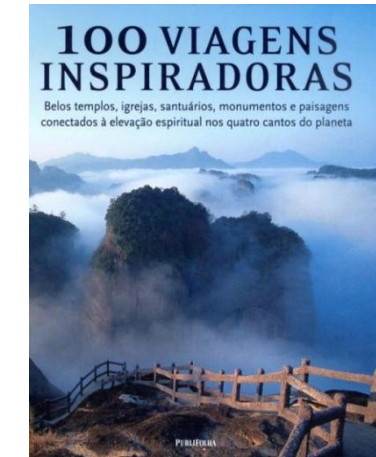
087.5 T468v



869.0(81) C386p

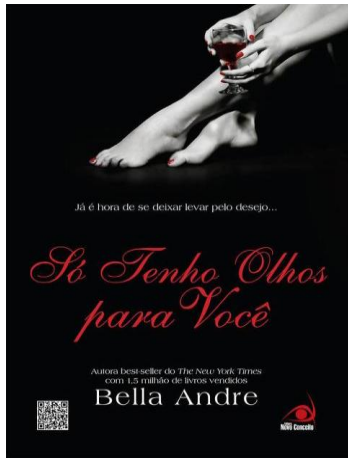


64.024.1 C235g



371.233 C393

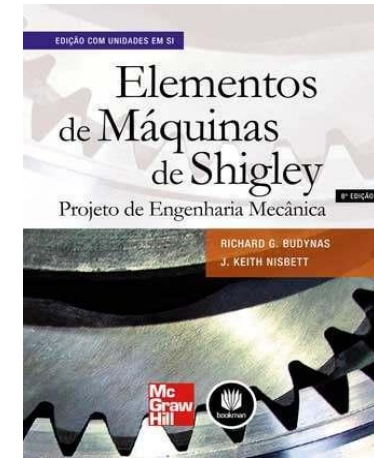
Novas Aquisições CII – Agosto 2013



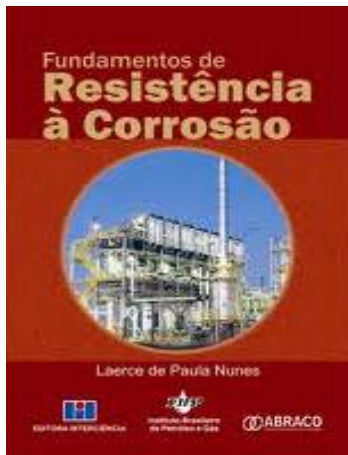
820(73)-3 A555s



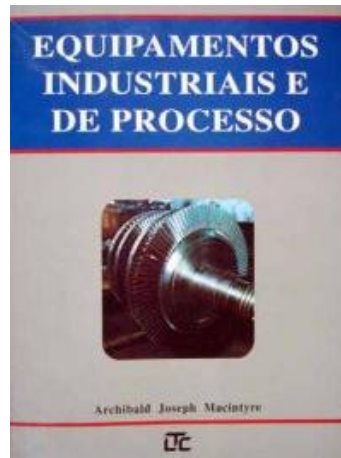
02 E48b



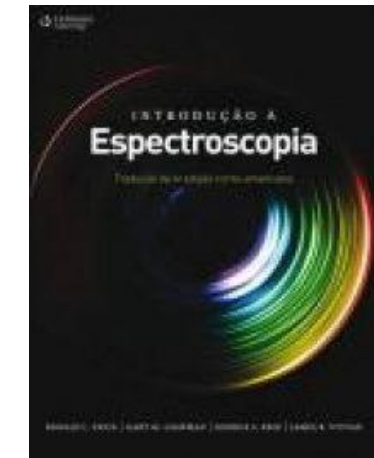
621 B927e 8.ed



620.193 N972f



67.05 M152e



543.42 I61

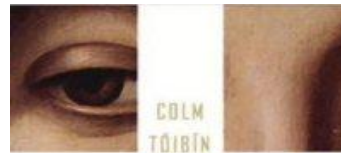
Novas Aquisições CII – Agosto 2013



Compressors
SELECTION AND SIZING

THIRD EDITION: **GIP**
P/IV

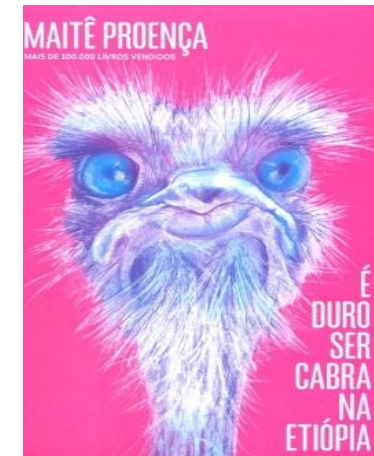
621.51 B877c 3.ed.



O TESTAMENTO DE MARIA



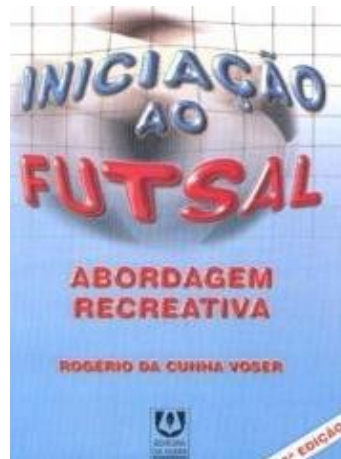
820(415)-3 T646t



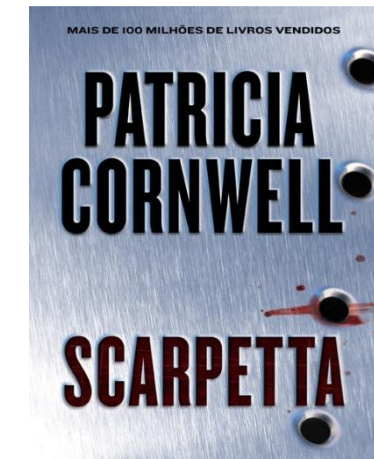
869.0(81)-94 D964



796:159.9 L414m

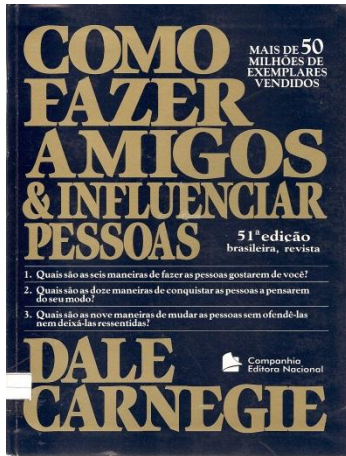


796.334 V961i 3.ed.



820(73) C821s

Novas Aquisições CII – Agosto 2013



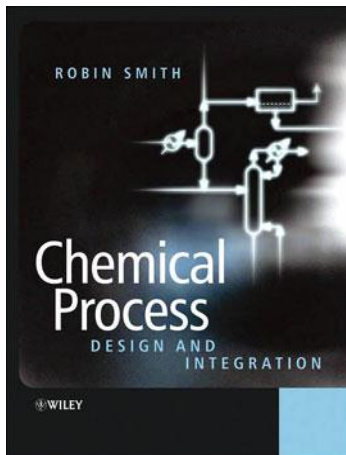
177.63 C289c 52.ed.



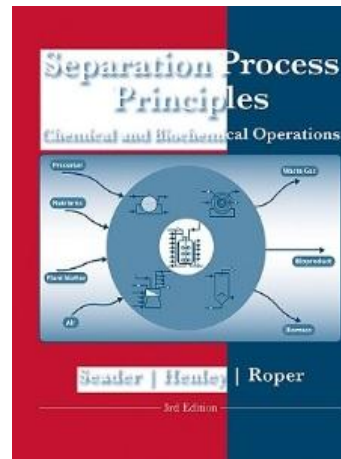
536.7 M476m



658.7 V658p



66.01 S642c



66.01 S438s 3.ed.



72.011.8.04 O39