

Novas aquisições CI – Abr. 2013



BIJ 087.5 W252v



784.9:616.22-008.5 P116c



820-31 K56I



BI 087.5 L481o



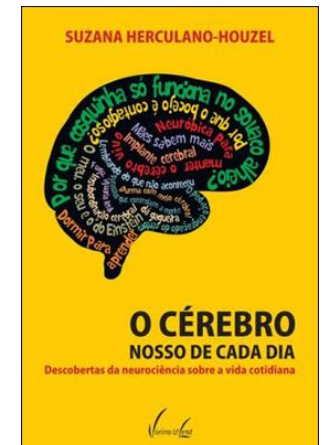
869.0(816.5)-31 W648c



372.878 M987 2. ed.

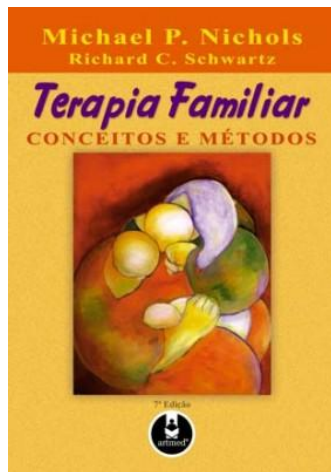


612.766 B536c



616.8 H539c 2.ed.

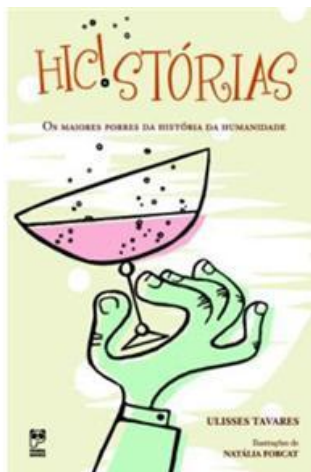
Novas aquisições CI – Abr. 2013



615.851 N621t 7.ed.



820-93.09 F515d



39:663.5 T231h



869(816.5)-94 V517t



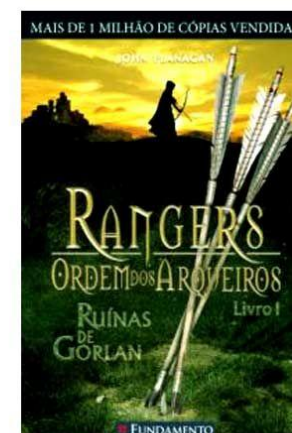
658:37.013 F383p



616.8 H844p



860(72)-31 T686q



820(94)-93 F583r

Novas aquisições CI – Abr. 2013



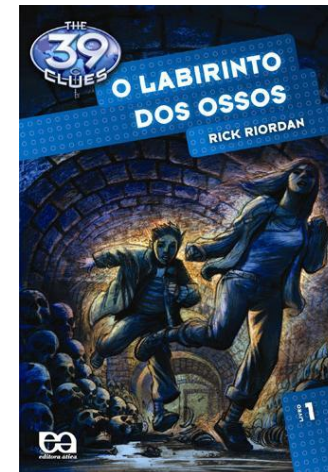
784.9.067.26(81) L533m



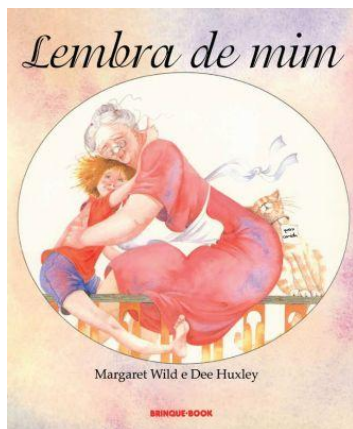
78:1 C377v



621.821 H539s 2.ed.



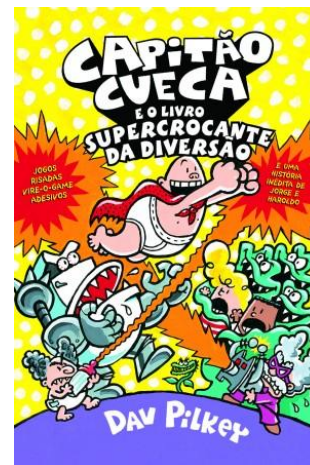
820(73)-93 R585I



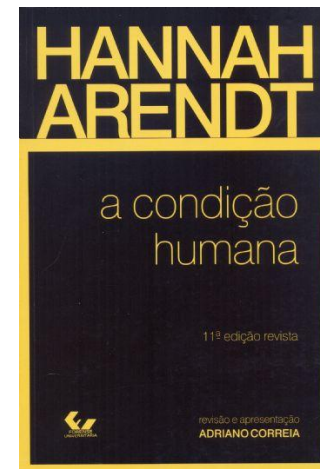
BI 087.5 W668I



376 C331e 5.ed.



820(73)-93 P639c



308 A681c 11.ed.

Novas aquisições CI – Abr. 2013



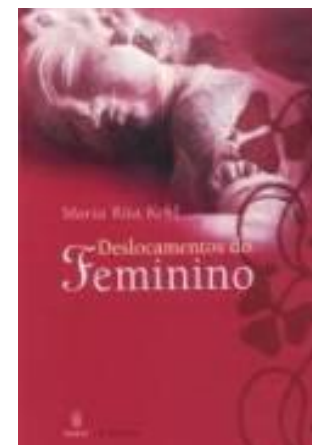
612.82 C323I 2. ed.



574 R539e 6. ed.



159.964.2 J82f 6.ed.



159.964.2-055.2 K26d 2. ed.



741:004 W872p 2. ed.



659.3(084):1 E84



791.43 C574

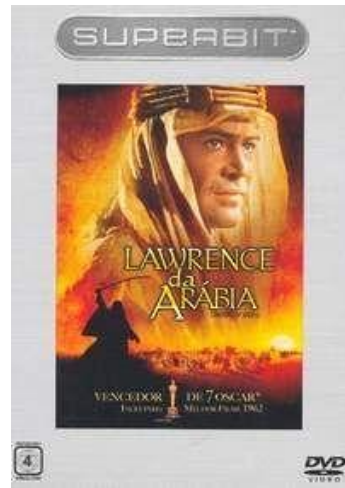


DVD 778.534.6 G572

Novas aquisições CI – Abr. 2013



DVD 778.534.6 B583



DVD 791.43-311.6 L419



DVD 791.43-13 D674



820(73)-93 B478p



820(73)-93 B478e



820(73)-93 B478e



616-083:378(81)(091) G373e



895.6-31 I79n

Novas aquisições CI – Abr. 2013



BI 087.5 B219o



BIJ 087.5 T121c



BIJ 087.5 A627